

MS 247
Box 1
1:1

GRAND CANYON RIVER GUIDES

POST OFFICE BOX 1934
(602) 774-1526

FLAGSTAFF, ARIZONA 86002
(602) 774-0526

VOLUME 1, NUMBER 1

The newsletter of the Grand Canyon River Guides

APRIL 1988

Professional guides dedicated to the quality of the Grand Canyon river experience

Grand Canyon River Guides

What the Hell??? Oh boy, another unasked for piece of mail and just when the season's about to start too... What is this anyway? Well, welcome to **Grand Canyon River Guides** and our as yet unnamed newsletter. Here's the nitty gritty: GCRG has been in the works for some time now but officially emerged from the shell a couple of weeks ago in a get together in the Hatch warehouse at Cliff Dwellers. What a setting! Here's the skinny...

Grand Canyon River Guides was formed:

1. To help preserve the Grand Canyon river experience.
2. To give the Grand Canyon river guides a unified voice in matters concerning river management in the Canyon.
3. To provide a forum to exchange ideas and solutions regarding on-river problems which affect us all.
4. To promote high standards of excellence for the guiding profession in the Canyon.

Yeah, but just who is GCRG?? Well, we are, like many of you, Grand Canyon guides who want to make a difference in our favorite place, you guessed it, the Canyon. Which brings us to why. Just because its that important a place and nobody really knows it in the way we do. Whether you motor a J-rig or row a gaily painted dory, you face the same problems and feel the same way about that big ditch. GCRG is a means to get some of our collective voice together. We are a large, scattered community and this organization can be our clubhouse. Through the organization we will exchange information, solve many of our on-river problems, and make our views on management known to the powers that be. We've only just begun and you are needed; your input, experience, enthusiasm. The more people involved the more effective we can be. There's a lot we can do.

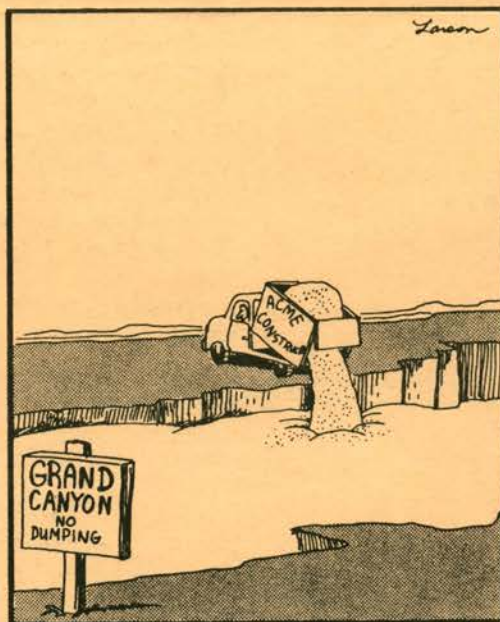
Join us, get involved, send ideas and submissions for the next newsletter and/or meeting. Bend the ear of your GCRG company representative soon and keep things flowing. See ya at Havasu.....

Membership

Now that we've formed this Grand organization we need you to join. Without members and dues we can't really accomplish much. Now, you ask, "what's in it for me besides the satisfaction of being a member and having a voice in what's said and done?" Well, for starters we're looking into a group insurance policy for those interested (details soon). We're hoping to organize First Aid and CPR classes to coincide with the semi-annual meetings, gearing them especially to the needs and standards of Grand Canyon Boatmen. You'll be kept informed of new developments and issues in the Canyon and what you can do about them. And, of course, you get to come to the two best parties of the year!!!

We have two classifications of members: a guide member either works in the Canyon now or has in the past; a general member is anyone else interested in our club. Outfitters are welcome to join as a member guide (if they qualify) or general member.

We've tried to keep the dues low enough so that you can afford them, yet high enough so that we can generate enough money to accomplish something. That comes to \$20, one thin Andy Jackson. Become a part of this. Join today.



Unfortunately, Larry had always approached from the side that wasn't posted, and a natural phenomenon was destroyed before anyone could react.

GCRG OPPOSES GUIDE LICENSES

Licensing of Guides is about as popular as assigning camp sites or outlawing beer dragbags. No one is opposed to the need for guides to be thoroughly familiar with the river regulations and, if necessary, testing to assure that that is the case. However GCRG feels that the testing be part of a certification process just as First Aid, CPR, and trip minimums are now. Certification means a guide has met the requirements to work in the Canyon, licensing is a whole new ballgame and requires obtaining permission to work, something coincidentally that can also be taken away.

GCRG has written the Park agreeing to not oppose the testing but urging that the test be part of the present certification procedure. We asked that licensing be postponed a year and reviewed to come up with a more acceptable alternative. If you have ideas and opinions on licensing please tell us about it.



For Your Information, Items of Interest

Glen Canyon Environmental Studies

You already know that the Glen Canyon Environmental Studies program was initiated by Secretary of Interior Watt on December 8, 1982, following considerable public controversy over the proposed peaking power plan and the uprating and rewinding of the generators at Glen Canyon Dam. The purpose was to evaluate the relationship between dam releases and the natural and recreational resources of the Grand Canyon. Well, the study is out, and besides serving as a dandy 10 lb doorstop, it makes for interesting reading.

Two of the principal conclusions are that some aspects of dam operations have substantial adverse effects on the downstream environment (surprise!!) and that modified operation could protect or enhance most resources. Flood flows and fluctuating flows were found to be most damaging to beaches, to recreation, and to terrestrial and aquatic plants and animals. But GCES is not intended or designed to lead directly to changes in dam operations. To do so, an Environmental Impact Statement and National Environmental Policy Act compliance must be done. **The truth is an EIS has never been done on the dam.** Now is the time to get on the horn and write the following folks asking that an Environmental Impact Study follow. Write to...

- Donald P. Hodel, Secretary of Interior
Dept. of Interior, 18th & C St., Wash., D.C. 20240
- C. Dale Duvall, Commissioner,
BuRec, 18th & C St., Wash., D.C. 20240
- William P. Mott, Jr., Director, NPS
P.O. Box 37127, Wash. D.C. 20013
- Request an Environmental Impact Study of the operations of Glen Canyon Dam as they affect the Grand Canyon.
- Support the GCES findings that fluctuating flows erode beaches, impact the quality and safety of river recreation, threaten the continued existence of endangered native fishes, and impact the trout fishery.

You can get a copy of the GCES report by writing to:

Dave Wegner, GCES,
BuRec
P.O. Box 11568
Salt Lake City, UT 84147

Colorado River Management Plan

The NPS is in the process of reviewing and revising the Colorado River Management Plan. Items up for discussion will be the user day allocation system (private and commercial), crowding at attraction sites, winter use allocations, river guide certification, fishing trips, GCES, and campsite management. The first input period ends June 88. Attend a public workshop or send your input to the Superintendent, GCNP, P.O. Box 126, Grand Canyon, AZ 86023; request CRM Plan draft.

The first public workshop for input to the CRMP revisions will be held **April 22** at Flagstaff City Hall Council Room. There will be two meetings, the first at 3pm, the second at 7pm. Be there and be heard.

Uranium Mining Update

With eight operations adjacent to the Kanab Creek drainage and one mine at the head of Havasu Creek, a Grand Canyon uranium mining district threatens to destroy the integrity of the National Park. Increased water and air pollution, potential radioactive spills down side canyon drainage, massive road-grading, and increased traffic to the rims are already impacting the Canyon and Park.

Friends of the River, the Sierra Club and the Havasupai's have been appealing several mine permits, and intend to take the Canyon Mine case to Federal Court this year over an insufficient EIS ("no significant impacts" found) and the failure of the BLM, Forest, and Park Services to conduct a regional study.

SPEAK OUT!!! send your views and a demand for a regional EIS and reform of the 1872 Mining Act to the Arizona Congressional delegation, or to your own congressman. (see below)

Aircraft management update

Last year Congress passed legislation to "provide for the substantial restoration of the natural quiet and experience of the Park..."

As a result, the NPS drafted its Aircraft Management Recommendation which banned flights below the rims and created "flight free" zones covering 44% of the Park. Three cross-canyon corridors were created at Hance, Crystal, and Fossil, as well as open-flights above the rims in Marble Canyon and the western areas.

Unfortunately last month the FAA gutted the NPS plan by widening the cross-canyon corridors from 2 to 4 miles, adding two new corridors (from National to Kanab and cross-canyon near Phantom), and further fragmenting the flight-free area concept. You can receive a copy of the NPS plan from Office of Public Affairs, NPS, Box 37127, Washington, D.C. 20013.

SPEAK OUT!!! The FAA comment period is over, but your informed and knowledgeable observations and opinions are critically important to our supporters in Congress: Senator John McCain, Rep. Mo Udall, with a copy to Dick Marks.

ADDRESSES: U.S. Senate (John McCain, Dennis DeConcini), Wash., D.C. 20510; U.S. House of Rep. (Mo Udall, et.al), Wash., D.C. 20515. Copy to Dick Marks, Superintendent, GCNP, Box 129, G.C., AZ 86023

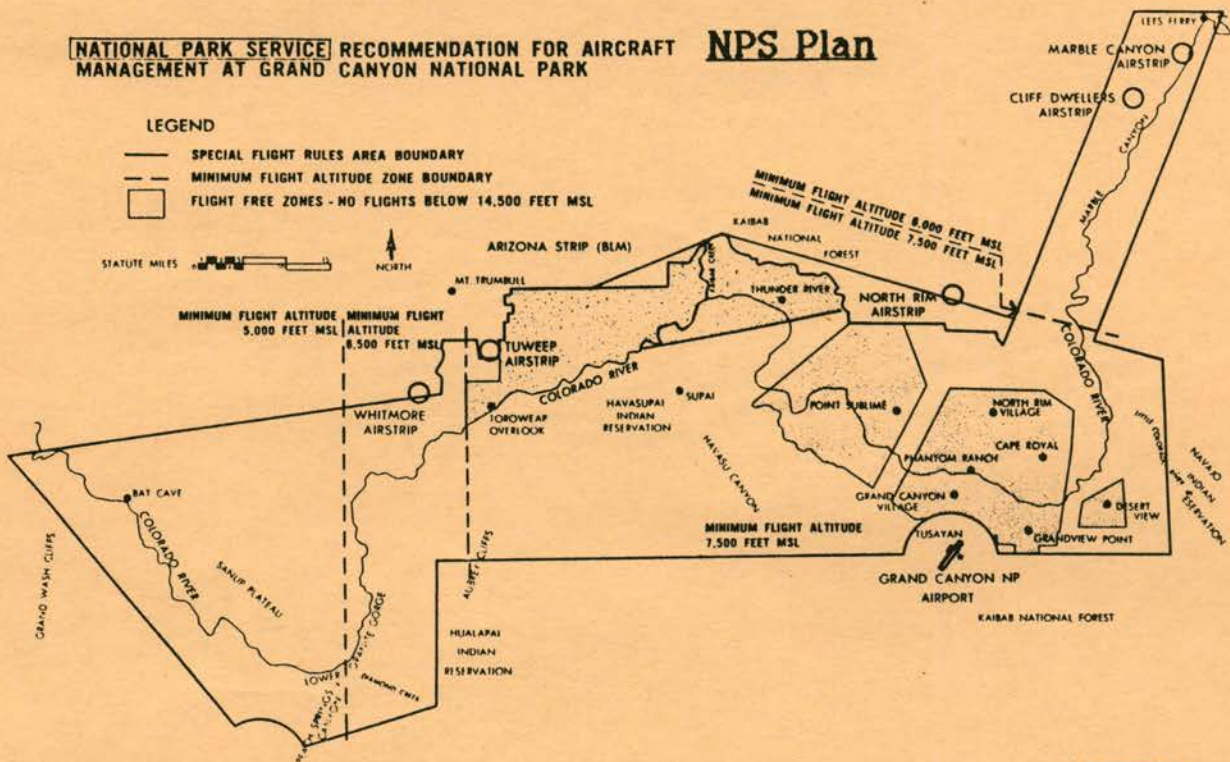
Martin has a plan.....

While we have been thinking of ways to live with fluctuations from Glen Canyon Dam, Martin Litton came up with a typically profound idea. In a 15 min. presentation at the GCRG meeting he stated his belief that rather than make a compromise on semi-satisfactory flows from Glen Canyon, we should demand that **ALL** peaking power operations be moved to Hoover Dam. He feels that Hoover can provide the necessary fluctuations without harm to its downstream environments or loss of power revenues. This would leave Glen Canyon as a base load facility and permit limiting its flows to seasonal fluctuations which would preserve beaches and habitat. This concept gets more interesting the more its thought through. Hmmm....

Aircraft Flight Management Proposals

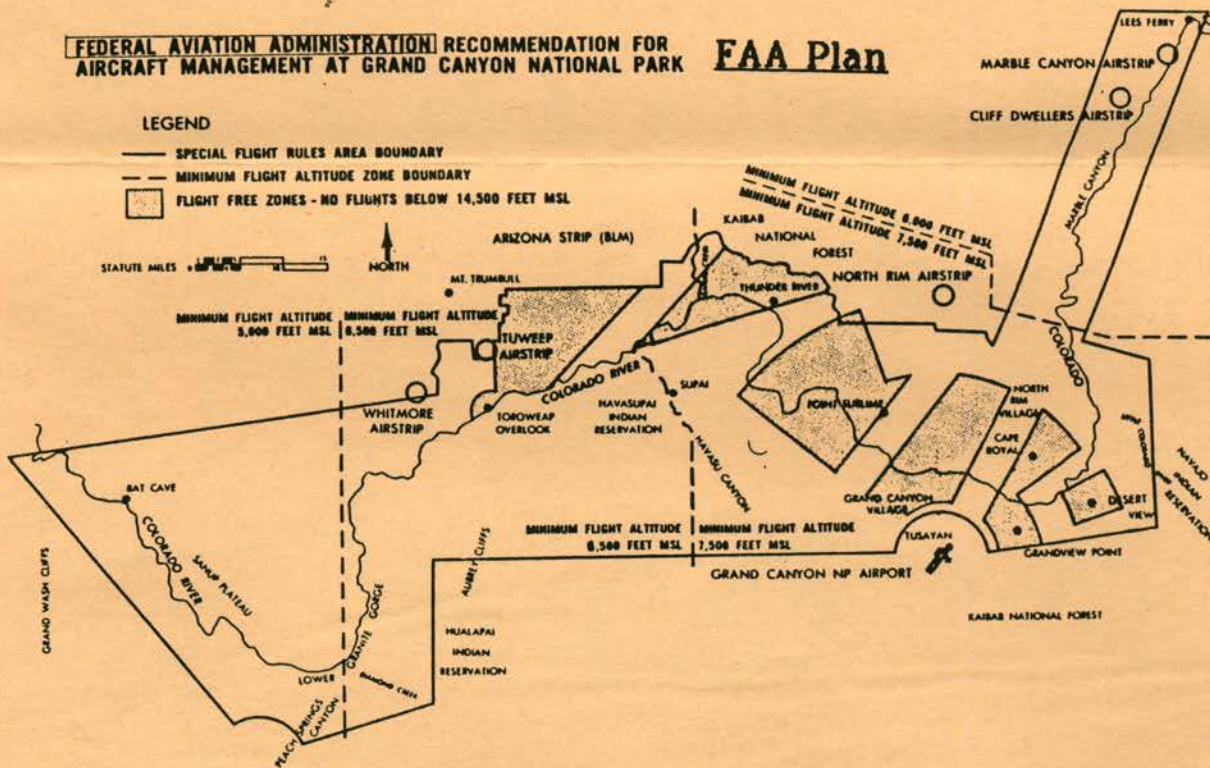
NATIONAL PARK SERVICE RECOMMENDATION FOR AIRCRAFT MANAGEMENT AT GRAND CANYON NATIONAL PARK

NPS Plan



FEDERAL AVIATION ADMINISTRATION RECOMMENDATION FOR AIRCRAFT MANAGEMENT AT GRAND CANYON NATIONAL PARK

FAA Plan



Send ideas and in put to:

Senator John McCain, U.S. Senate, Washington, D.C. 20510
 Rep. Morris Udall, U.S. House of Rep., Washington, D.C. 20515
 Dick Marks, Supt., GCNP, Box 129, Grand Canyon, AZ 86023

Maps are from FAA public meeting March 3, 1988 and are presented by:

Grand Canyon River Guides

P.O. Box 1934

Flagstaff, AZ 86002



GCRG Company Reps



As you may imagine, GCRG has no staff and no full time central office. To provide a common link throughout the guide pool it was suggested that a representative is needed in each company. The guides below have volunteered to distribute information and accept input for GCRG, in reality they are GCRG. Talk to them and make it work.....

- Adventure West.....Bill Ellwanger
- AZRA..... Suzanne Jordan
- ARR.....Tim Whitney
- Canyoneers.....Shane Murphy
- Canyon Explorations.....Jane Bernard
- Colorado River and Trails.....Bill Trevithick
- Diamond.....Karen Byerley
- Expeditions..... Geoff Gorley
- Grand Canyon Dories..... Brad Dimock
- Grand Canyon Expeditions.....Nels Niemi
- Georgie's River Rats..... Georgie Clark
- Hatch River Expeditions.....Bill Ellwanger
- Hualapai.....
- Moki Mac..... Mike Jacobs
- OARS.....Bruce Helin
- Outdoors Unlimited.....Gary Bolton
- Sleight.....Walt Gregg
- Tour West..... Dave Stratton
- Western..... Jim Anderson
- Wilderness River Adventures..... Karen Byerley

The First Meeting

Critical mass of boatmen consciousness was finally reached and the first official meeting of the Grand Canyon River Guides was held the weekend of March 26 & 27 in the Hatch warehouse at Cliff Dwellers. Over 100 guides contributed written input to the meeting and 25-30 guides were present representing about half of the GC river companies. Ted Hatch, Martin Litton, and Clair Quist were present and spoke to give their support and endorsement of the newly formed association towards the fulfillment of our goals.

By-laws, basically drawn from WRGA, were adopted and officers and directors elected. Terms of office are to be 2 years with elections held at spring meetings; executive officers on even years, directors on odd years. The 7 elected officers will comprise the Board of Directors. Meetings will be held in the first week of March and in late October or early November just before the NPS Concessionaires meeting.

We discussed a number of river concerns including congestion at the ramp, the loss of downstream campsites and consequent congestion, lack of campsites on the lake, and the NPS testing program this summer. Resolutions were passed:

- opposing NPS licensing of guides,
- supporting the NPS Aircraft Management Plan
- supporting the GCES report
- calling for an EIS on Glen Canyon operations.
- asking that trips without interchanges not camp below Hance
- suggesting a buoy be placed asking that lake boaters not camp above Spencer Canyon

The Flip Side

"I like to travel and I have the capacity to entertain myself more than most people, but even geologists can lose interest in an infinity of dry red rock. I found the first few days inspiring and the fourth a little dull. On the fifth day I started wishing for an escape helicopter. Now this is going to make some people unhappy but my experience is not all that different from the run-of-the-mill tourist's, despite how much canyon buffs glorify it." -- Franz Lidz, *New York Times travel section*, March 27, 1988

HEAVILY PROTECTED
AGAINST THE
INTENSITY OF
EXPERIENCE.



Grand Canyon River Guides P.O. Box 1934 Flagstaff, AZ 86002

Officers: Pres. - Kenton Grua; V.P. - Bill Ellwanger;
Sec./Tres. - Denice Napoletano;
Board of Directors: Terry Brian, Dave Edwards,
Mike Walker, and Tim Whitney

Annual Dues: General Members.....\$20
Guide Members\$20

Membership Application

name _____ nickname _____
 birthdate _____ S.S. no. _____
 address _____
 ph #: summer _____ winter _____
 year started in GC _____ no. of GC seasons _____
 no. of trips: motor _____ oar _____ paddle _____
 present employer _____
 other GC employers _____

In 1938, Norman Nevills offered the first commercial river trip through Grand Canyon. Nevills' cataract boats, sometimes referred to as "sad-irons" were modified from earlier designs by Nathan Galloway. The cataracts were wooden, sixteen feet in length, and six feet at the beam. Each boat carried a boatman and one or two passengers. Included on this trip were the first two women to ever travel completely through the Grand Canyon by boat (Bessie Hyde?).

The 1938 trip had its problems (as nearly all do). There were disgruntled boatmen and passengers. It was impossible for some of this group to understand why Nevills insisted on lining certain rapids. We contemporaries have some understanding of his caution. Quoted from his 1938 diary, "I have done my best to impress the seriousness of this undertaking on them. It's good to know that the folks at home are thinking of us. they needn't worry, I'll get the party thru. Am in the best shape of my life and feel most

confident. Have kept us located every inch of the way." Leading such trips required a strict composure, some may label it ego. Imagine in 1938,no support, the sophistication of their equipment, the list goes on!

Three of Nevills' boats are on display: The Botany in the Smithsonian, the Wen at the South Rim Visitors Center, and the Mexican Hat II at the John Wesley Powell Museum in Page.

Norman Nevills was my grandfather on my mother's side. Though he died before I met him, his life has had a profound impact on my feelings for the Canyon. By examining his journals, maps, and photographs, I begin to appreciate the courage required to lead such expeditions so far removed from civilization. Unlike today, there were no other river parties to lend assistance.

We, as river guides of today have the privilege of sharing our knowledge and reverence for the Grand Canyon with our passengers. Thanks be to all pioneers that helped make this possible.

--- Cam Stavely ---

Favorite Canyon Quotes

Lady from South Carolina after lecture on the Great Unconformity:
--- "Tell me, before these different oceans came in and laid down their deposits were skin divers able to examine the floor of each one before the next ocean came in?"

Female passenger from L.A. to Trusty Guide:
--- How far to camp?
--- Ohh, about two miles.
--- From here?

Cadillac with Jersey plates at the Ferry:
--- Which way does the river flow?
--- From the mountains to the sea.
--- Does it follow the Canyon most of the way??
--- Guess ya got me there...

Send us your favorite golden quotes for the next newsletter

South Rim Seminar

The NPS is again offering the Grand Canyon Boatmans Training Seminar to all guides and potential guides. The classroom sessions will be held April 29, 30, and May 1 at the South Rim.

The Friday sessions will concern emergency medical procedures in the Canyon (not certification) and helicopter evacuations. There will also be guest speakers in geology. Saturday's agenda includes the Colorado River Management Plan, guides forum, and talks on Pleistocene and current mammals of the Canyon. Sunday there will be talks on archeology, geology, and biology.

The seminar will begin at the Shrine of the Ages. Crumbo has reserved a site at the Mather Campground for guides, free of charge. He is asking a 5 buck a day donation for the lecturers. Guides forum is free. For more info call him at (602) 638-7840. These are always informative and almost as much fun as a GCRG meeting!



Circus, Circus on the lake??

The Hualapai tribe is currently making claim to the north side of the river opposite Guano Point (mile 267) based on prehistoric religious sites. In addition they are in the process of developing plans for a hotel and casino in conjunction with an associate of Circus, Circus in Las Vegas. This is to be built on the south side. A pleasure boat marina is planned on the lake and a 7500' dirt airstrip has already been constructed. Presently up to 150 people a day are flown in from Las Vegas to picnic and enjoy the view. Is this good for the lower Canyon? In addition to the increased traffic, control of both sides of the river by the Hualapais could revive the specter of a lower canyon dam.

SPEAK OUT!! Send in your thoughts and request more info from the South Rim, GCNP, P.O. Box 126, Grand Canyon, AZ 86023.

NPS' Kim Crumbo is leaving the Park River Unit this season. With his departure the River loses a great friend. We'll miss his presence. Many thanks for a job well done.

Grand Canyon River Guides
P.O. Box 1934
Flagstaff, AZ 86002

ISSUE HIGHLIGHTS

- **Grand Canyon River Guides Formed!**
 - Issues and Directions
 - The first Meeting
- **Guides Licensing**
- **GCES Report Update**
- **Uranium Mines Update**
- **Aircraft Management Plan**
- **Canyon Management Plan**